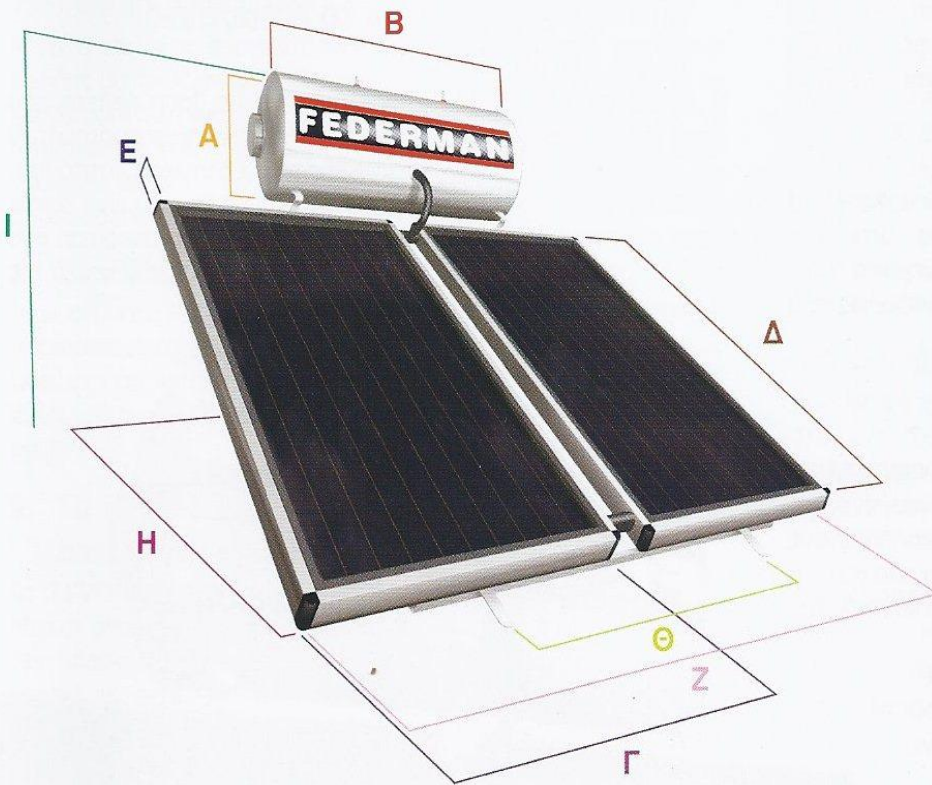
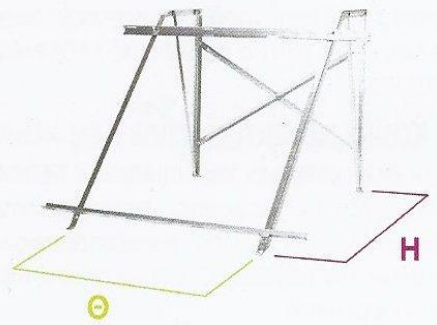


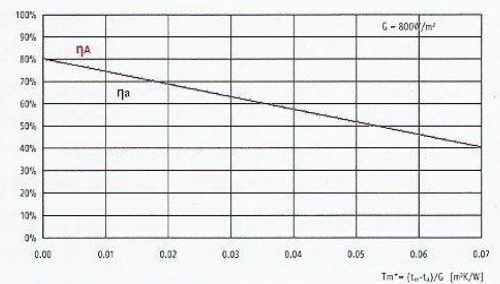
ΜΟΝΤΕΛΟ	ΑΡΙΘΜΟΣ ΣΥΛΛΕΚΤΩΝ	ΕΠΙΦΑΝΕΙΑ ΣΥΛΛΕΚΤΗ (m ²)	ΔΙΑΣΤΑΣΕΙΣ ΜΠΟΪΛΕΡ (mm)		ΔΙΑΣΤΑΣΕΙΣ ΣΥΛΛΕΚΤΩΝ (mm)			(mm)				ΗΛΕΚΤΡΙΚΗ ΑΝΤΙΣΤΑΣΗ
			A	B	Γ	Δ	Ε	Z	H	Θ	I	
GL-IN 120	1	2	530	1050	1000	2000	850	1000	2010	860	2080	4kw
GL-IN 160	2	3	530	1280	1000	1500	850	2200	1550	1080	1780	4kw
GL-IN 200	2	4	580	1280	1000	2000	850	2200	2010	1080	2080	4kw
GL-IN 300	3	6	580	1900	1000	2000	850	3400	2010	1548	2080	4kw
EGL-EIN 120	1	1,84	530	1050	1230	1500	850	1230	1550	860	1780	4kw
EGL-EIN 160 ^(KA)	1	2,25	530	1280	1180	1900	850	1180	2010	860	2030	4kw
EGL-EIN 160 ^(DP)	1	2,25	530	1280	1900	1180	850	1900	1370	1080	1530	4kw
EGL-EIN 200	2	3	580	1280	1000	1500	850	2200	1550	1080	1830	4kw
EGL-EIN 250	2	4	580	1750	1000	2000	850	2200	2010	1080	2080	4kw



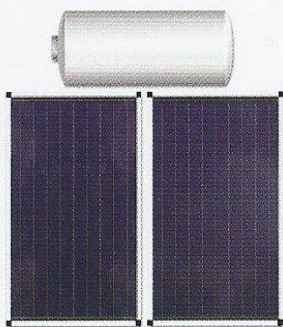
ΒΑΣΗ ΣΤΗΡΙΞΗΣ



ΣΤΙΓΜΙΑΙΑ ΑΠΟΔΟΣΗ [%]



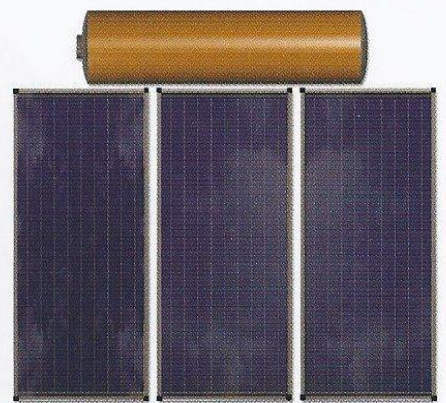
GL-IN 120



GL-IN 160



GL-IN 200



GL-IN 300

FEDERMAN